



Digijäljed avalikus ruumis

Age Poom

TÜ geograafia osakond, mobiilsusuuringute labor

Tartu planeerimiskonverents

2. november 2018

Mobiilsusuuringute labor



TARTU ÜLIKOOL



Rein Ahas



Anto Aasa



Siiri Silm



Age Poom



Anniki Puura



Veronika Mooses



Kristi Post



Frank Witlox



Janika Raun



Pilleriine Kamenjuk



Mattias Linnap



Erki Saluveer



Margus Tiru



Laura Altin

A decorative graphic on the left side of the slide, consisting of several concentric semi-circular bands in various shades of blue, from dark to light, creating a tunnel-like effect.

Kus inimesed paiknevad?

Kus ja kuidas inimesed liiguvad?

Kuidas inimesed ruumi kasutavad?

Kui ligipääsetav on ruum?

Kuidas ruum inimeste otsuseid suunab?

Millist mõju ruumikasutus avaldab?

ANDMED?



Küsitlus, vaatlus, intervjuu

Registrid, rahvaloendus

Suurandmed





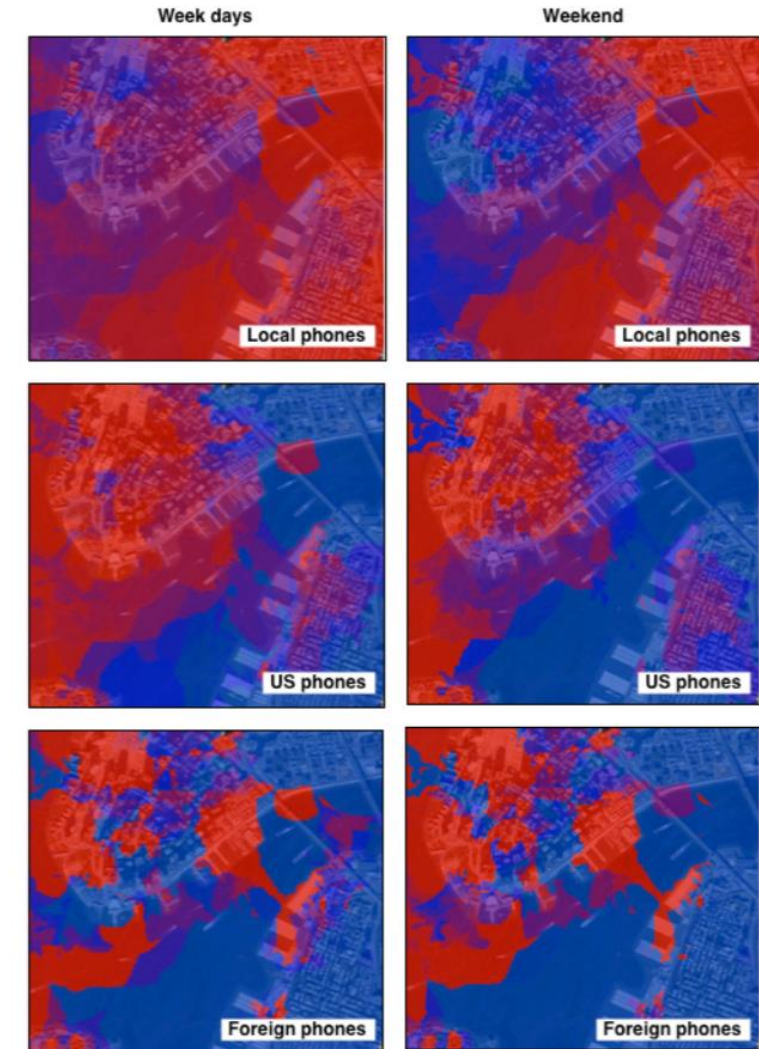
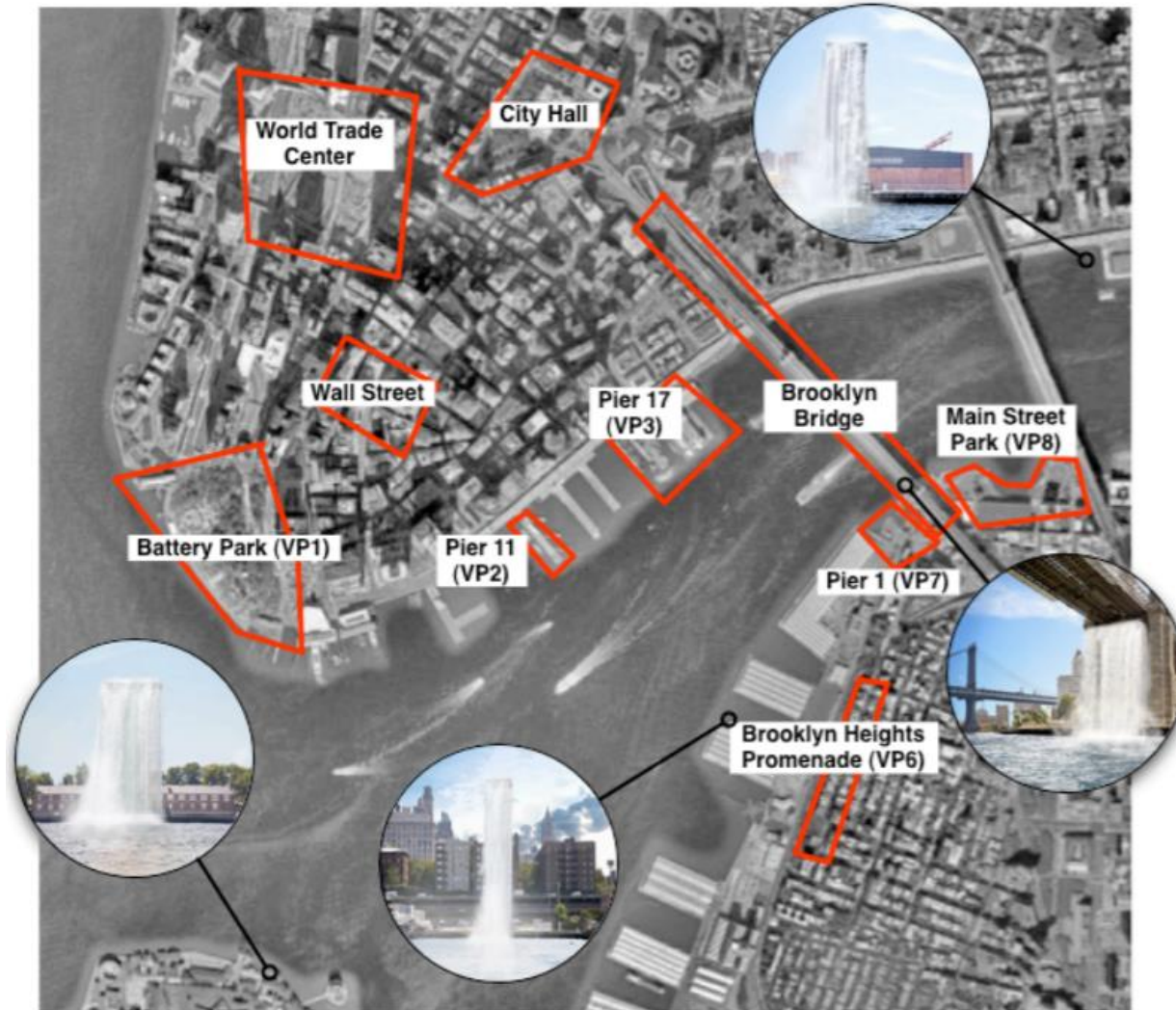
Uued suurandmekogud

IT ajastu avarad võimalused
Ruumiline ja ajaline täpsus,
dünaamilisus
(Lähi)-reaalajas jälgimine
Uued aspektid
Muljetavaldav andmemahht
Pikaajalise andmekogumise
lihtsus
Andmeühiku soodne hind

Sekundaarandmed
Esinduslikkus?
Tähelepanuta aspektid?
Metodoloogilised
küsimused
Keerukus, pikk andmeaabel
Privaatsus, andmete
kasutusõigus?



Ruumiline täpsus ja segmenteerimine

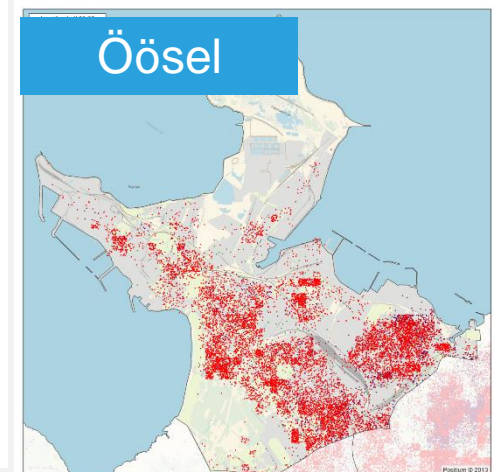
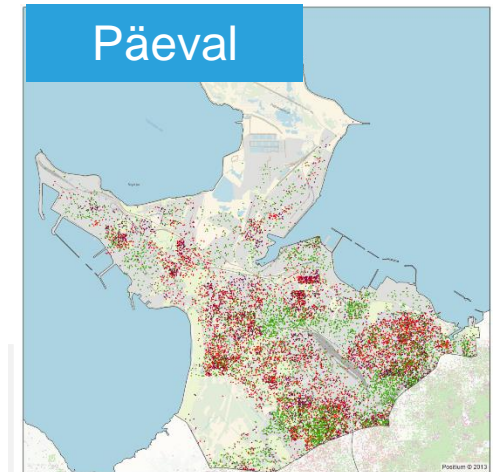
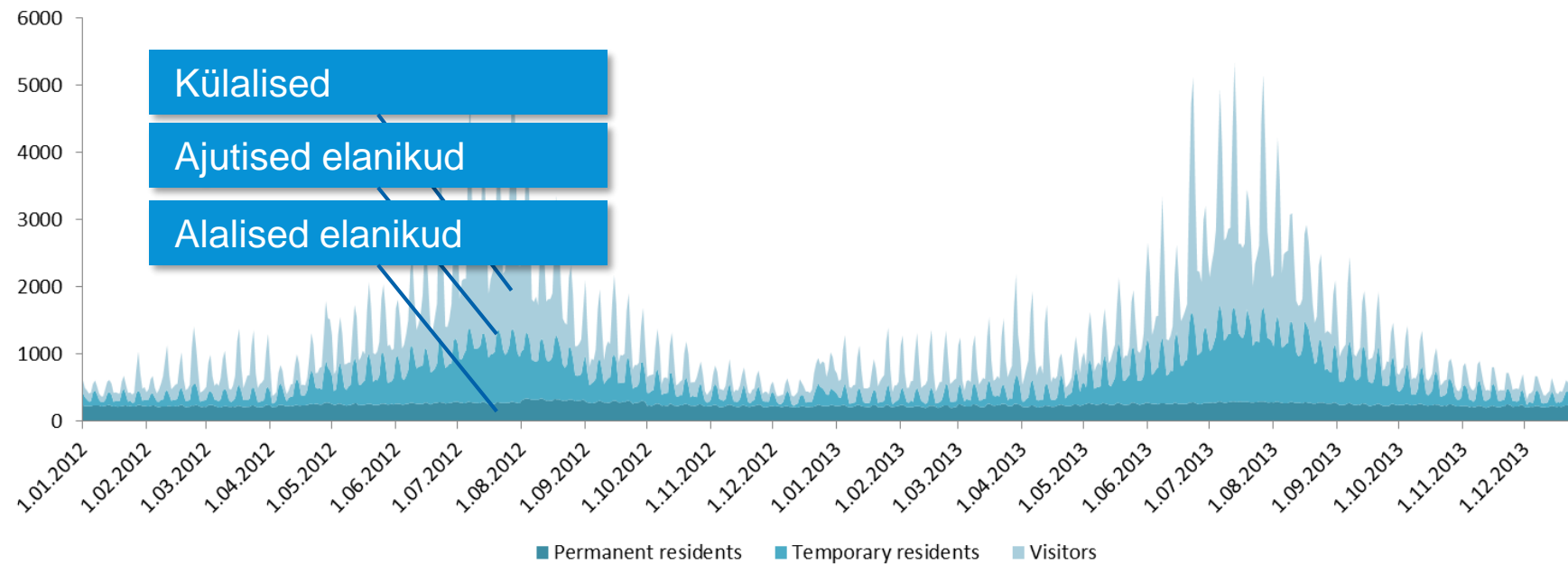


Girardin et al. 2009. Quantifying urban attractiveness from the distribution and density of digital footprints. *International Journal of Spatial Data Infrastructure Research*, 4.

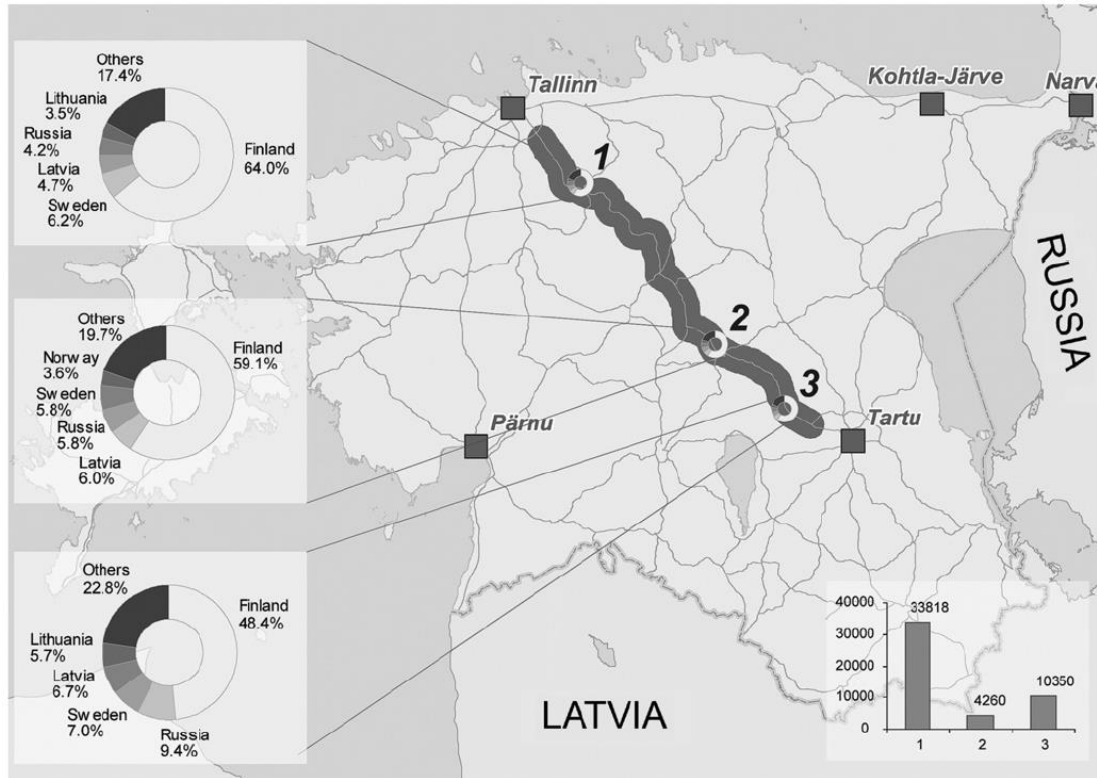
Positsioneerimisandmed ruumikasutuse hindamisel



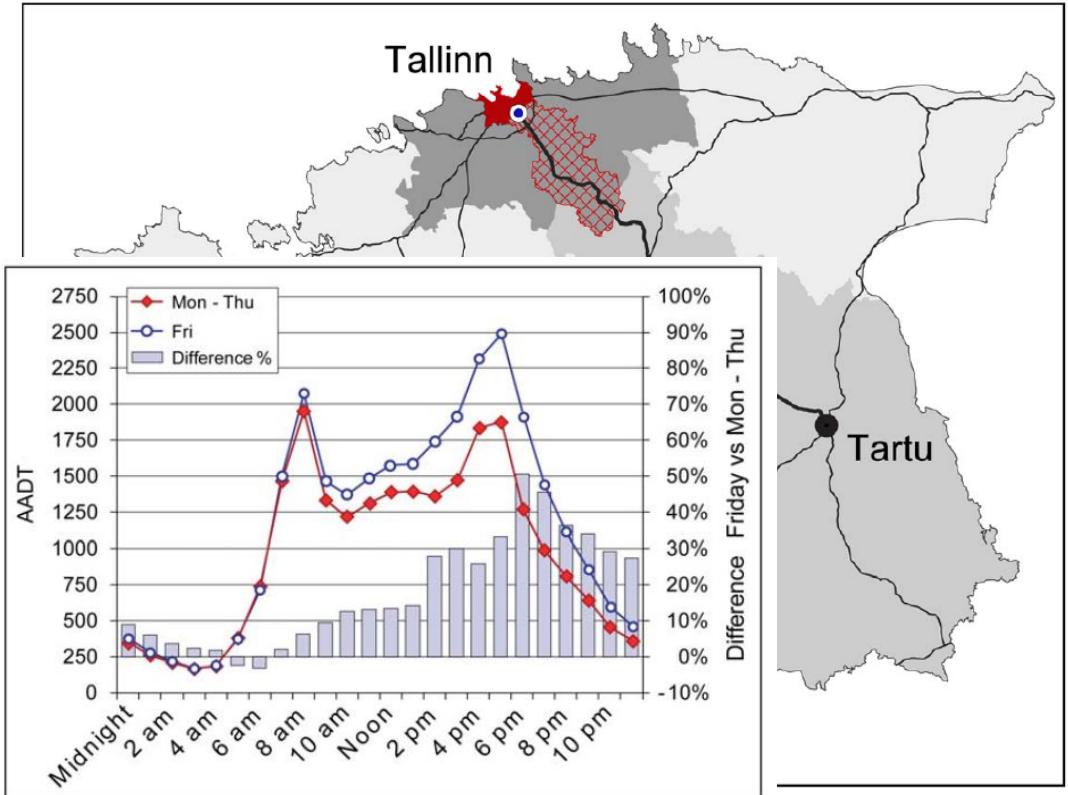
Endine Alajõe vald



Positsioneerimisandmed ruumikasutuse hindamisel



Välituristide liikumine Eestis



Maanteekasutus tipptundidel

Ahas et al. 2008. Evaluating passive mobile positioning data for tourism surveys: An Estonian case study. *Tourism Management* 29: 469-486

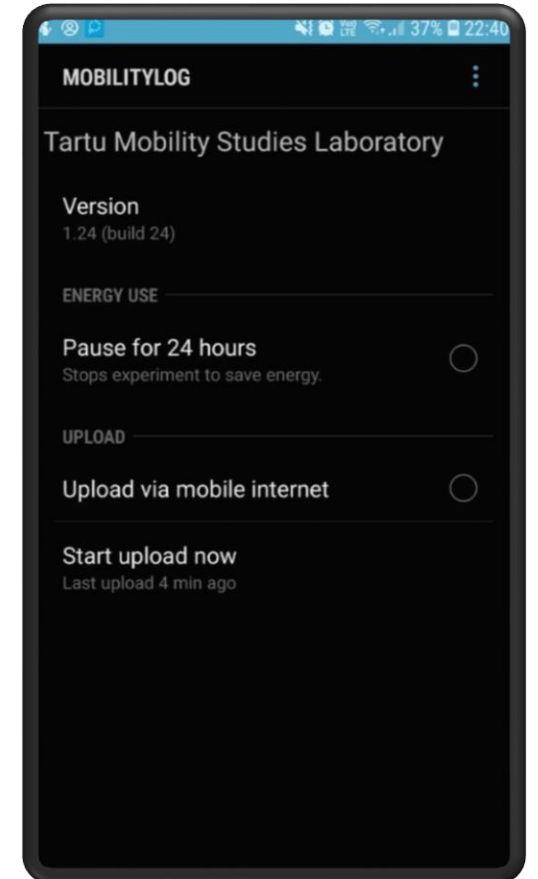
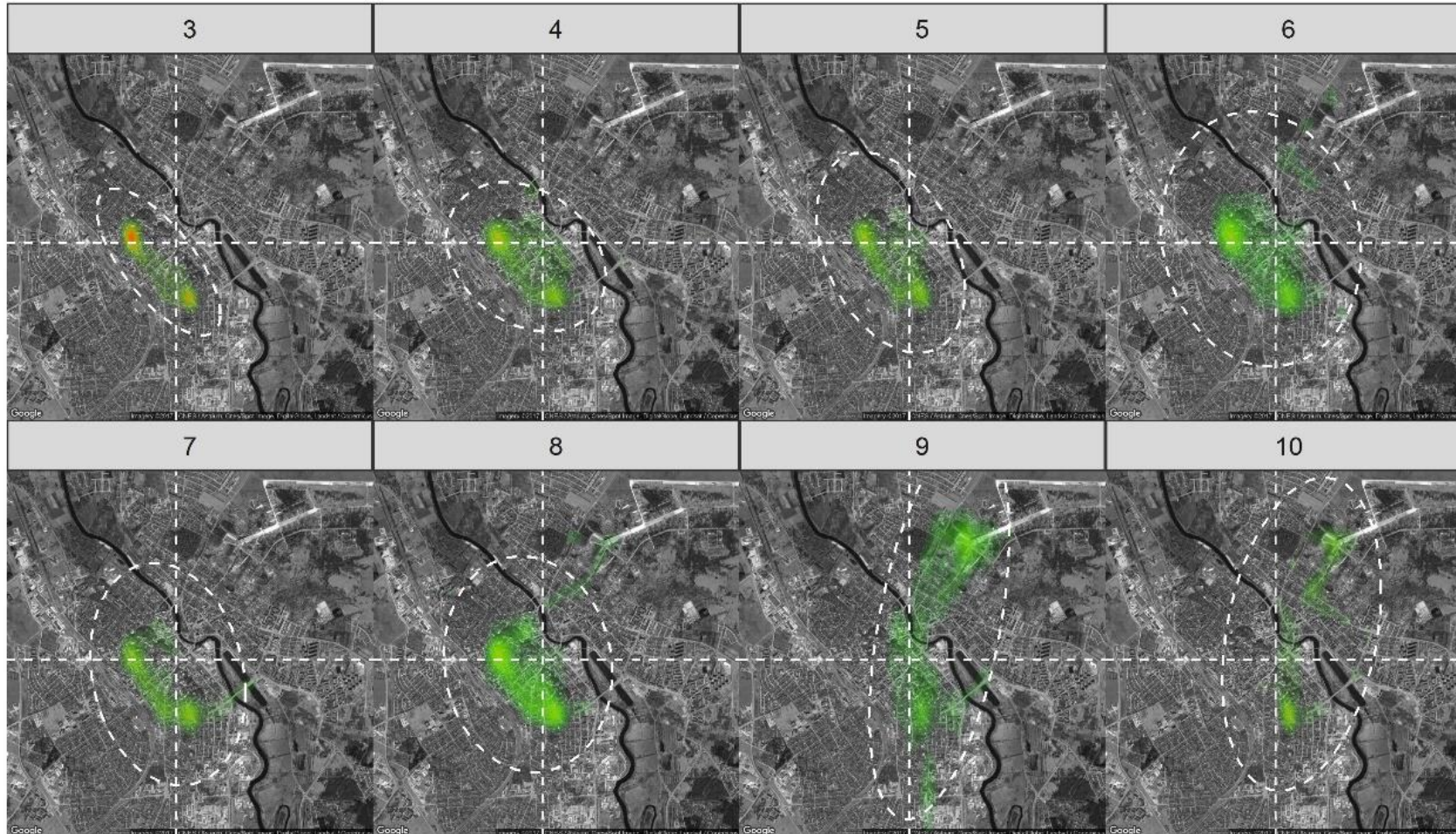
Järv et al 2012. Mobile Phones in a Traffic Flow: A Geographical Perspective to Evening Rush Hour Traffic Analysis Using Call Detail Records. *Plos One* 7:11, e49171

Ruumikasutuse muutus töökoha kolimisel



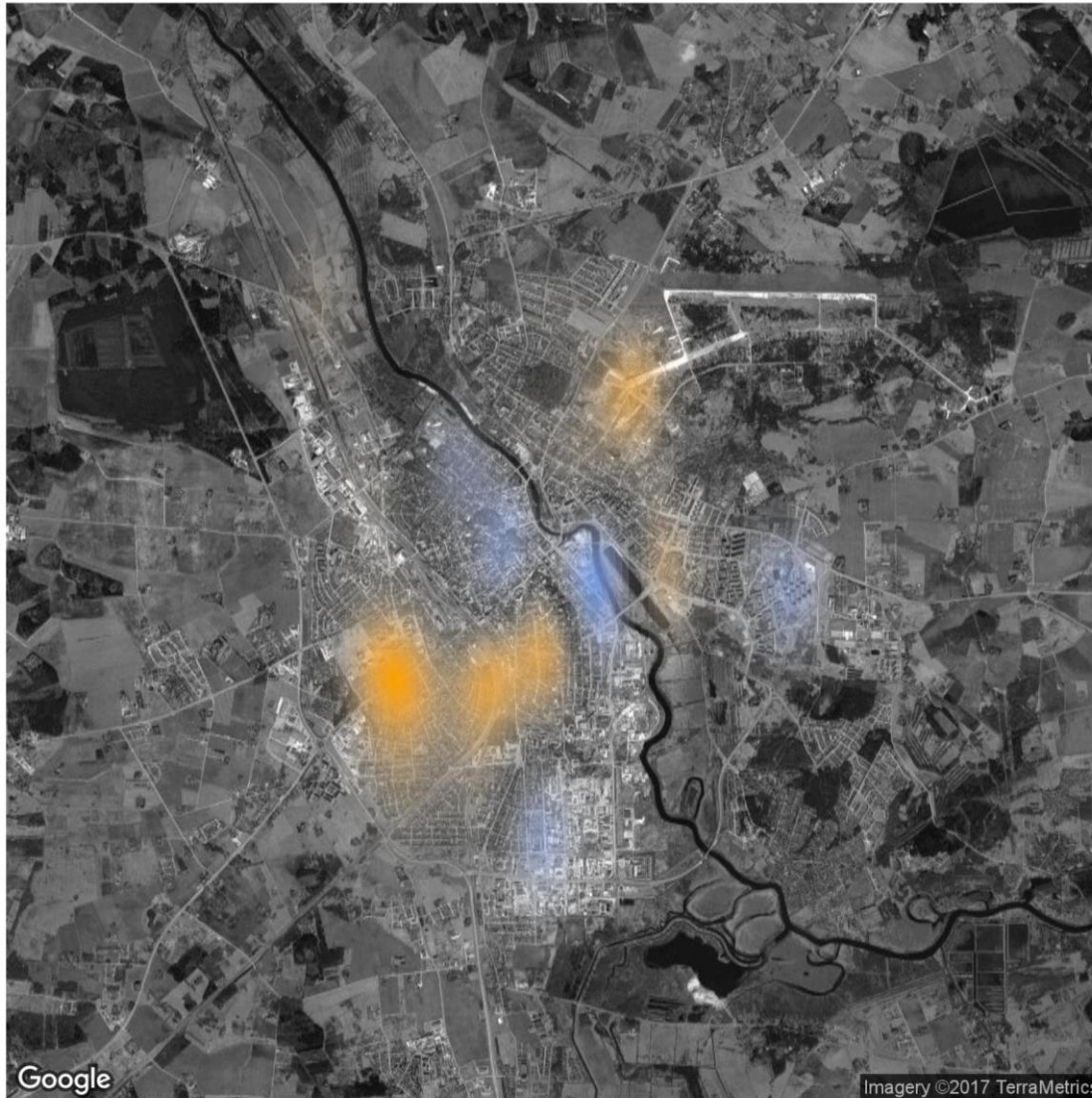
Graafika:
Anto Aasa

Ruumikasutuse muutus töökoha kolimisel

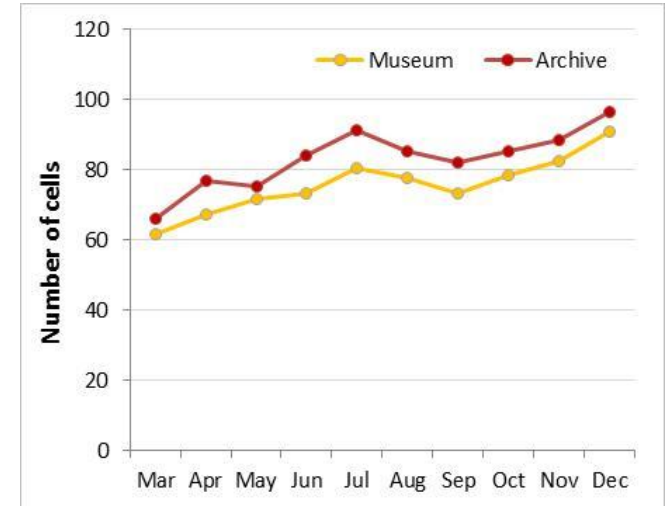


Graafika: Anto Aasa

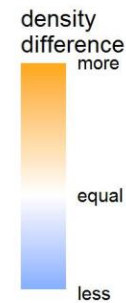
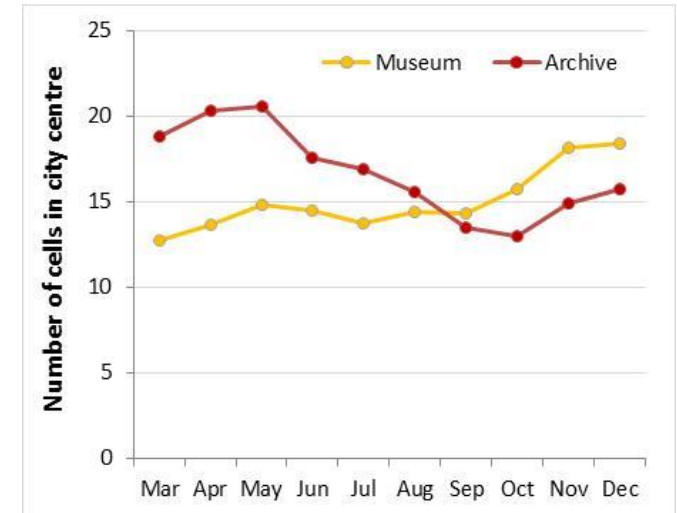
Ruumikasutuse muutus töökoha kolimisel



Ruumikasutuse ulatus Tartus



Ruumikasutuse ulatus Tartu kesklinnas



Linnaruumi külastatavus: sotsiaalmeedia



ITS Malta @MaltaITS · Sep 26

ITS students enjoying the [#greenarea](#) at the new relocated campus in [#luqa](#)

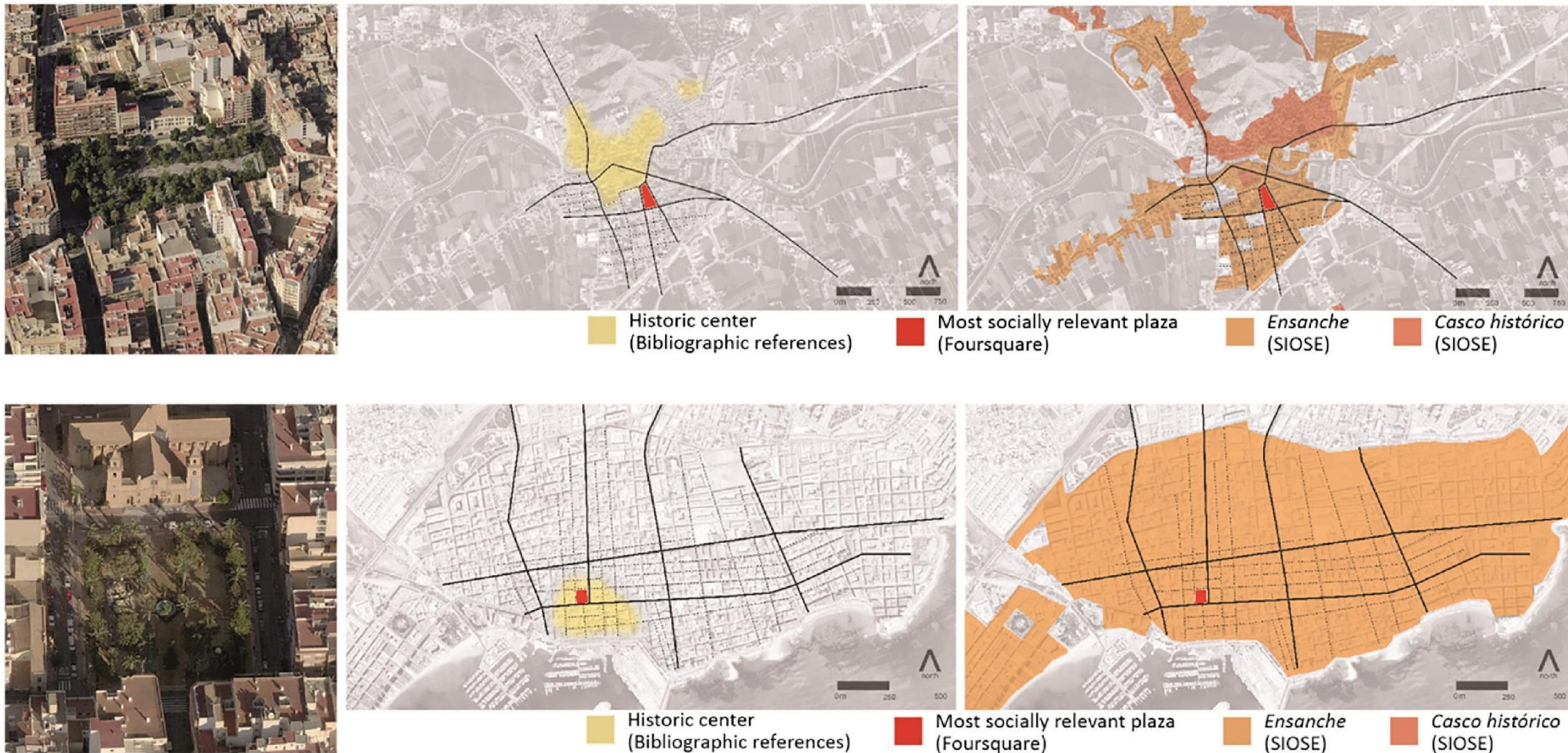


Jagdish Mahapatra @JagdishMahapat1 · Oct 23

This should be emulated by all cities. [#CarFreeDay](#) [#Singapore](#) @TwitterSG

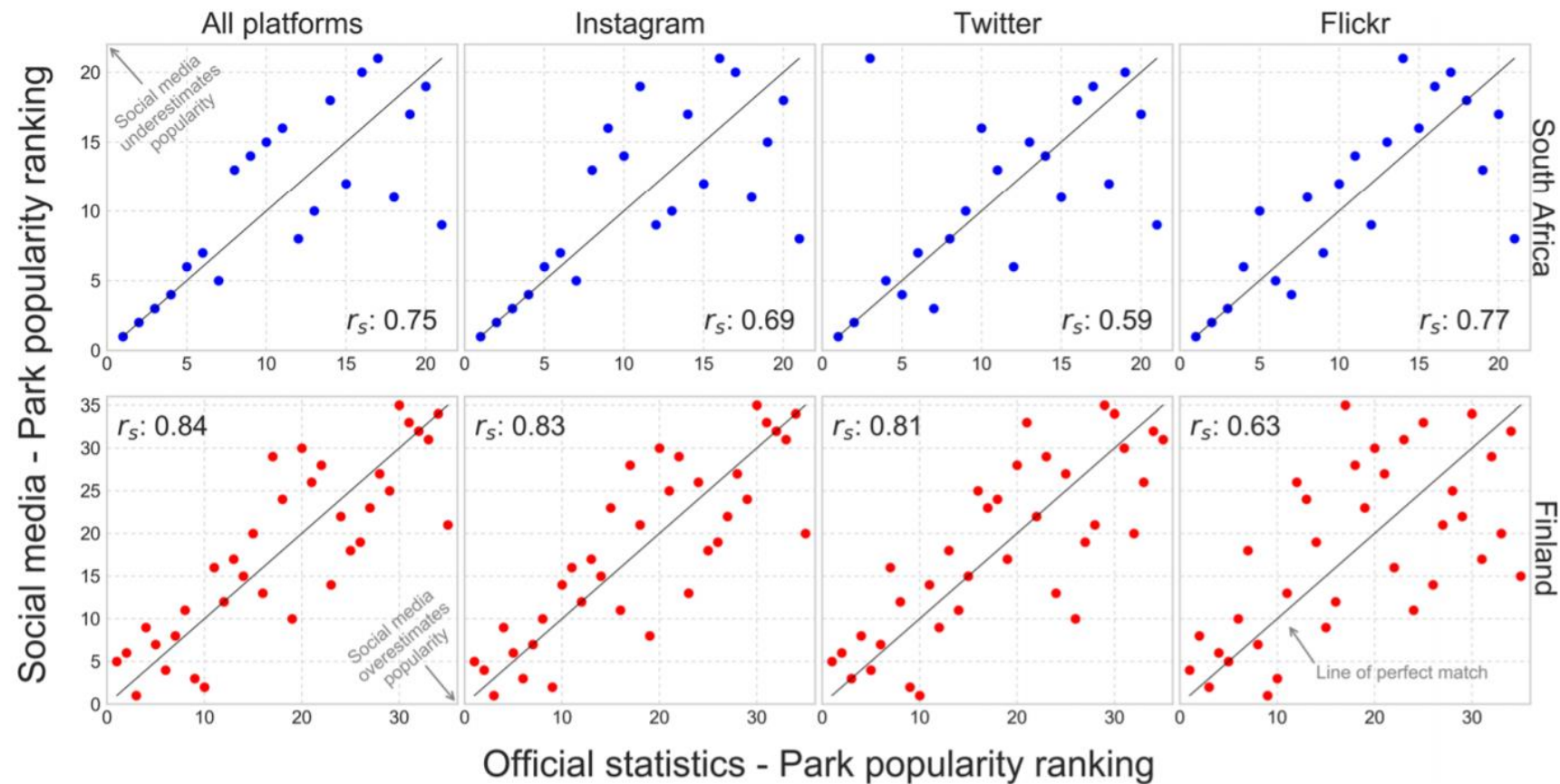


Linnaruumi külastatavus: sotsiaalmeedia



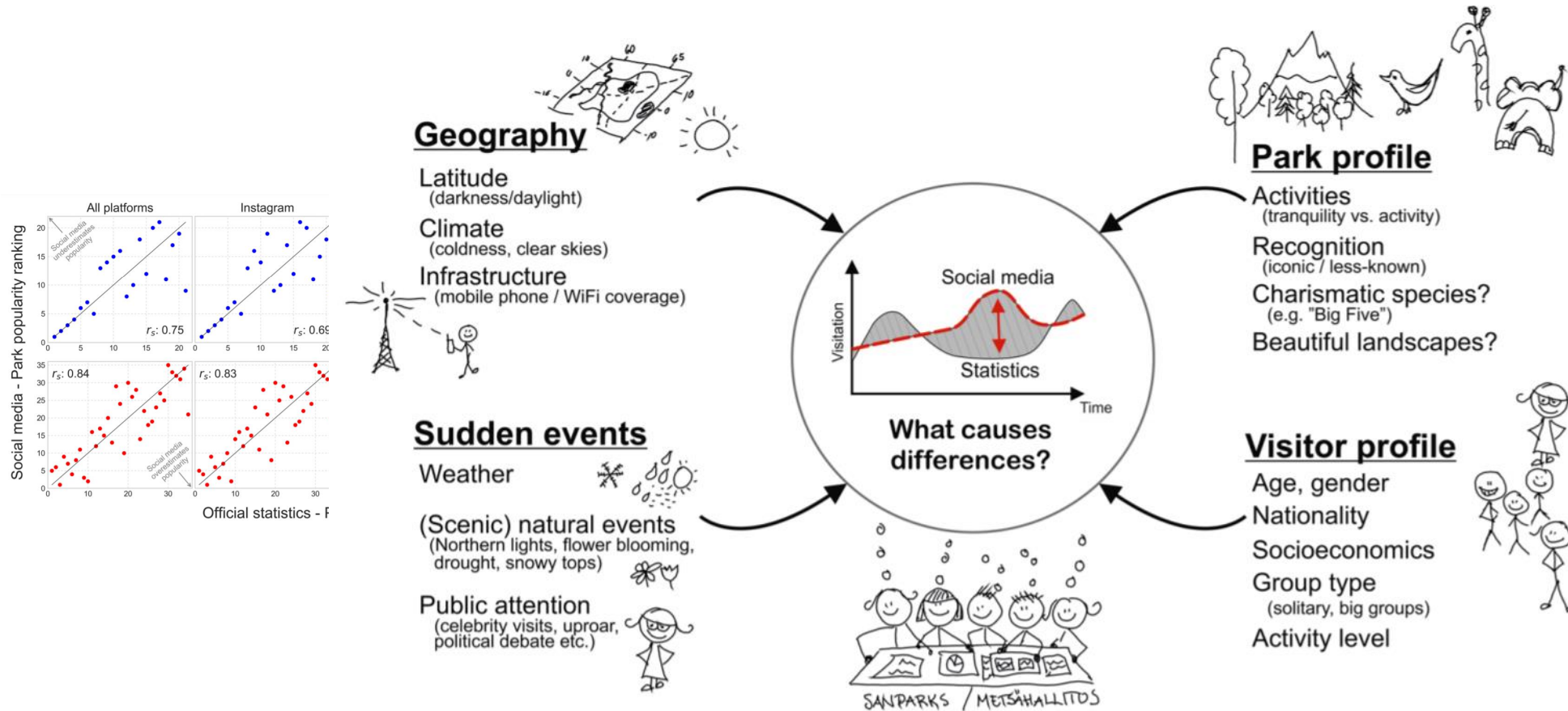
Marti et al. 2017. Using locative social media and urban cartographies to identify and locate successful urban *plazas*. *Cities* 64: 66-78.

Andmete valideerimine: sotsiaalmeedia vs looduskeskuse külastusstatistika



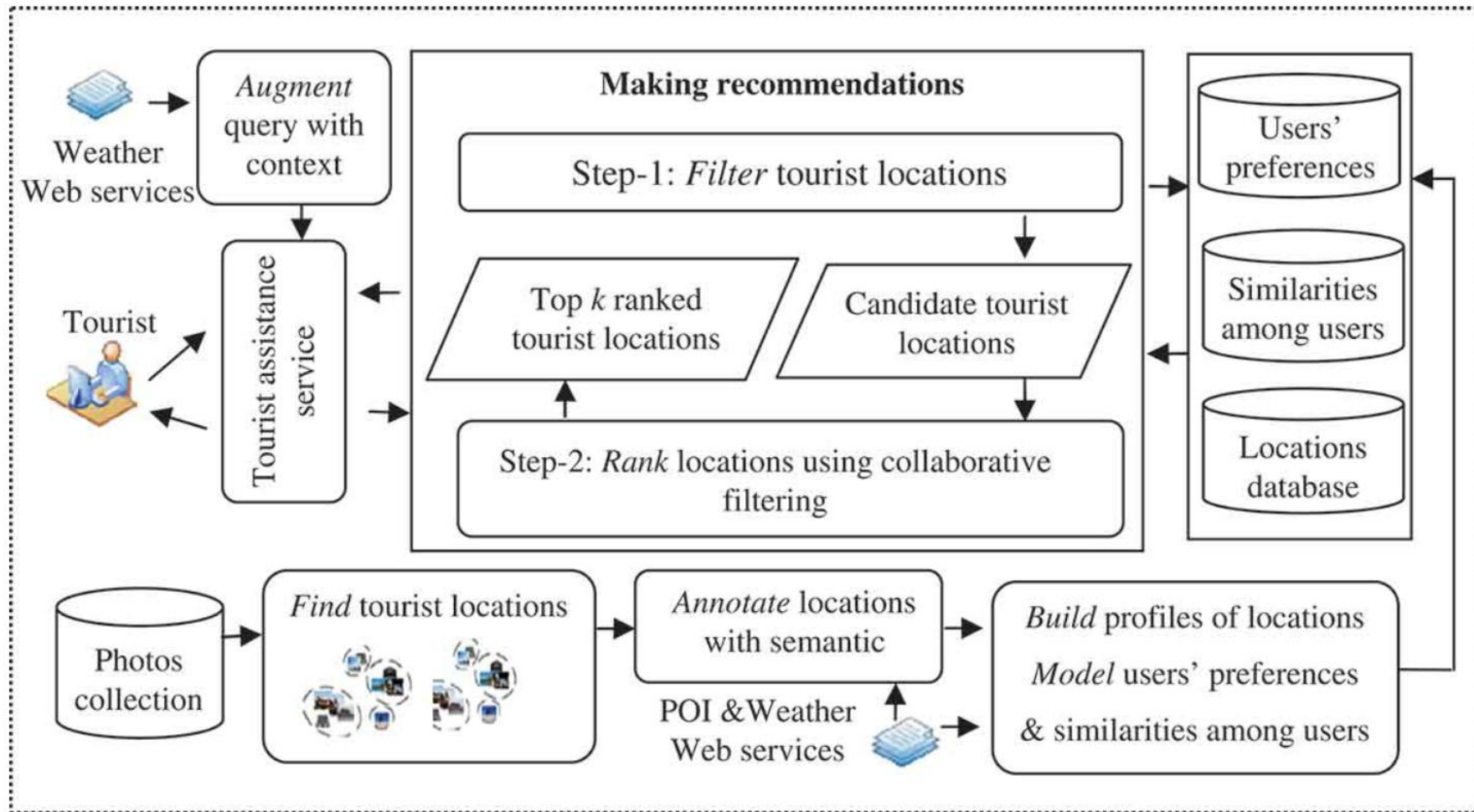
Tenkanen et al. 2017. 'Instagram, Flickr, or Twitter: Assessing the usability of social media data for visitor monitoring in protected areas' Scientific Reports, vol. 7, 17615.

Andmete valideerimine: sotsiaalmeedia vs looduskeskuse külastusstatistika



Tenkanen et al. 2017. 'Instagram, Flickr, or Twitter: Assessing the usability of social media data for visitor monitoring in protected areas' Scientific Reports, vol. 7, 17615.

Suurandmete andmehalduse ja -töötuse keerukus



Majid et al. 2013. A context-aware personalized travel recommendation system based on geotagged social media data mining. *International Journal of Geographical Information Systems* 27:4, 662-684.



*Live Baltic Campus
Campus Areas as
Labs for
Participative
Urban Design*

Age Poom

age.poom@ut.ee





TARTU ÜLIKOOL

TURKU
HELSINKI

UPPSALA
STOCKHOLM

TARTU

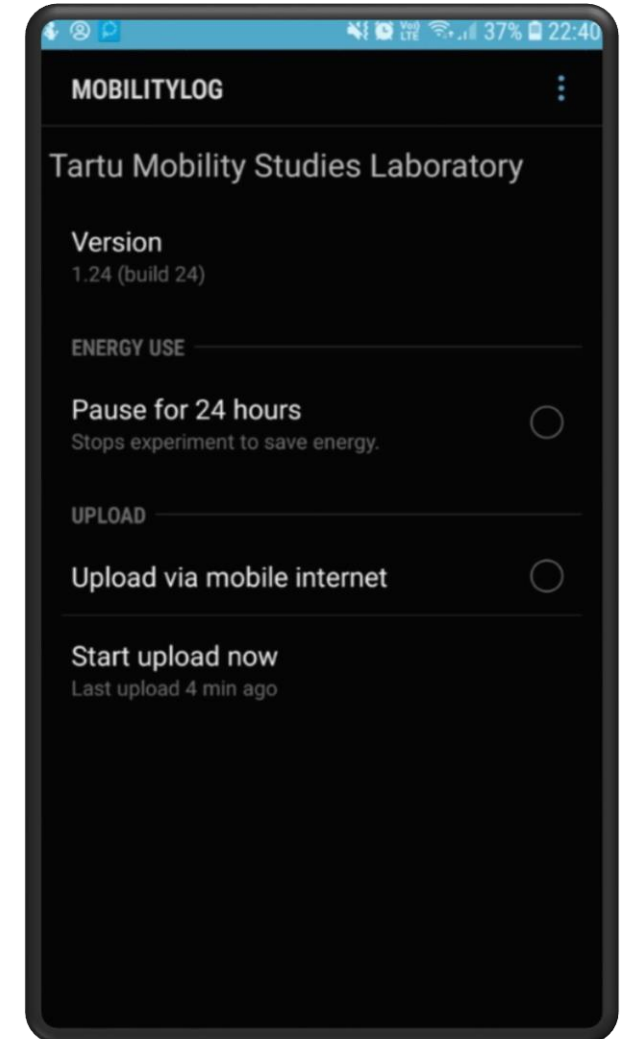
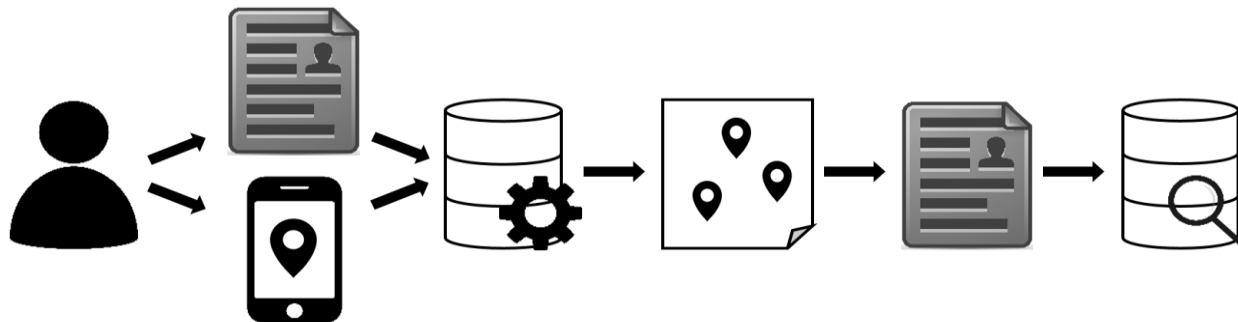
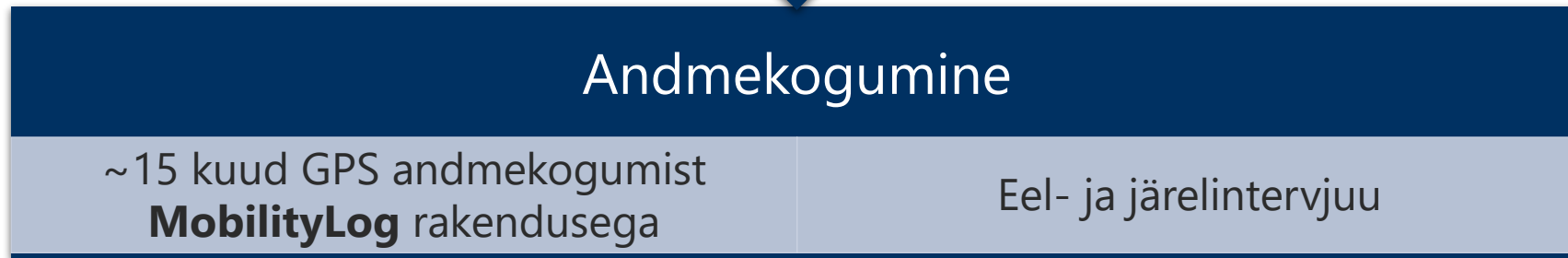
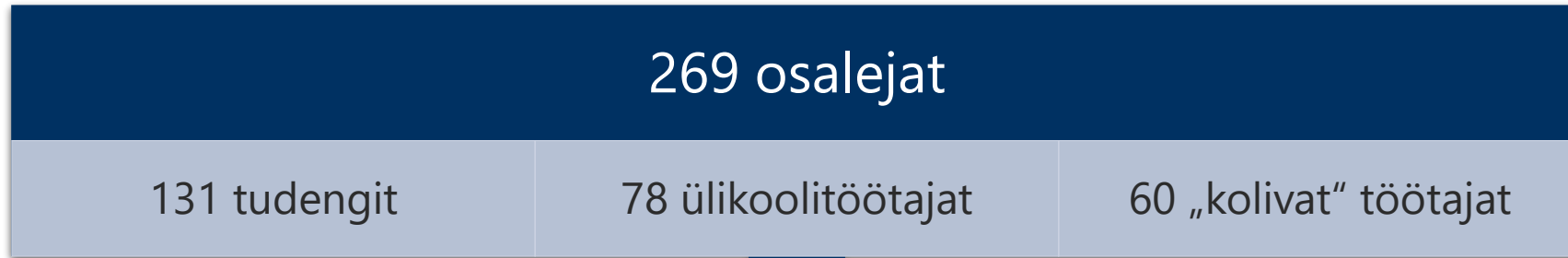
RIGA

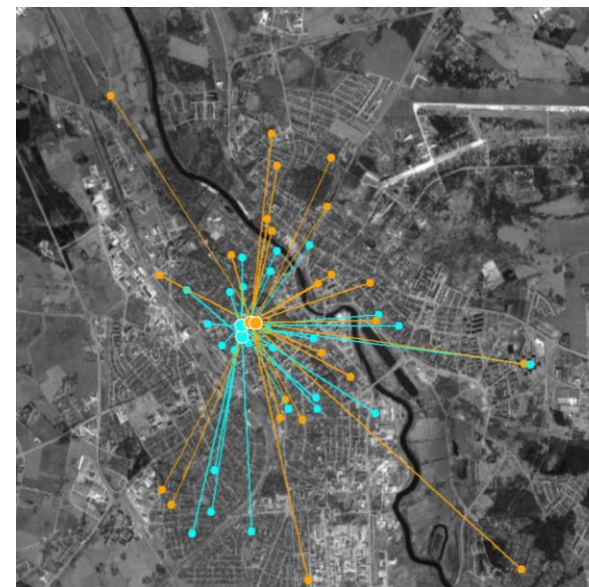
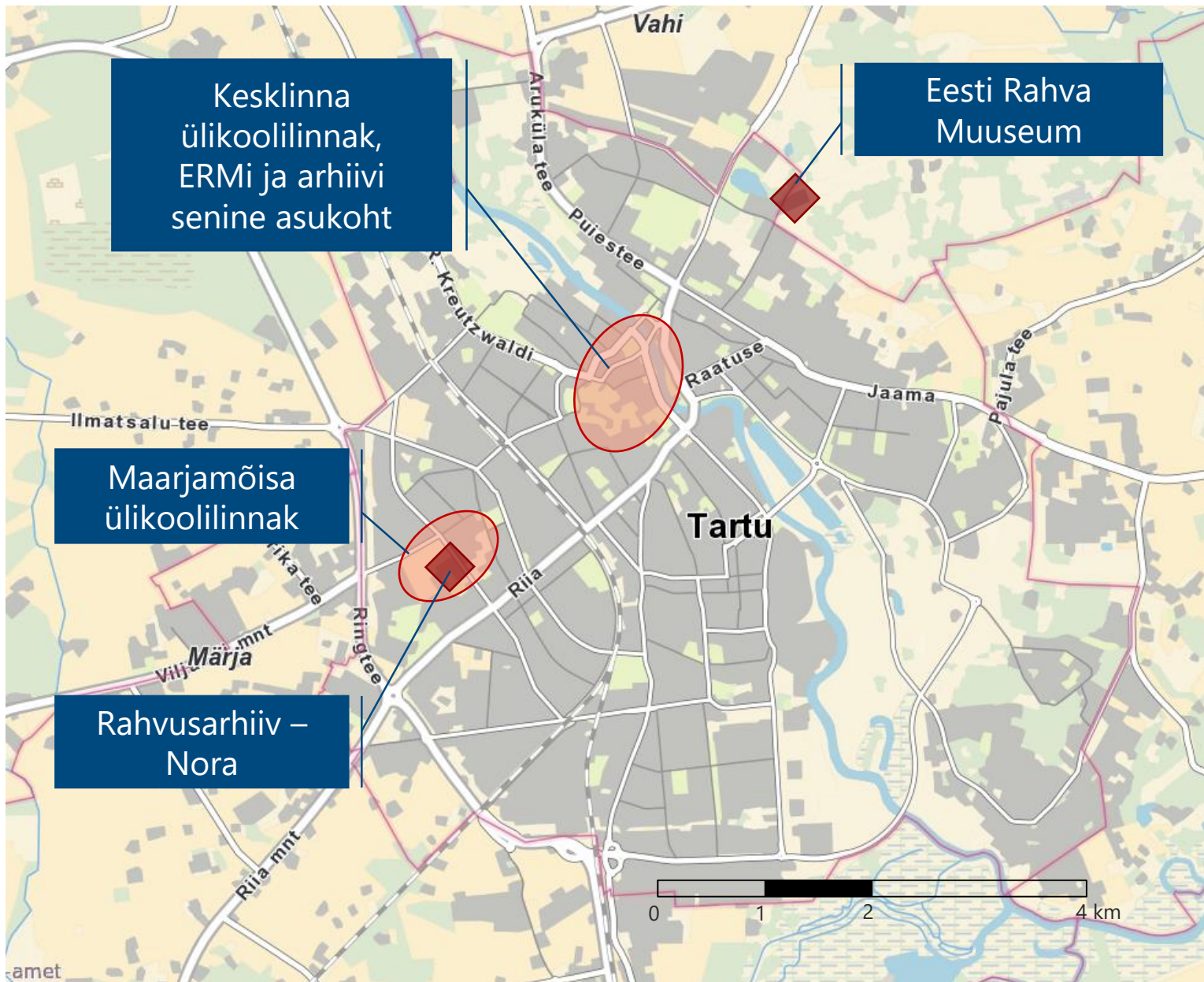
LIVE BALTIC

CAMPUS

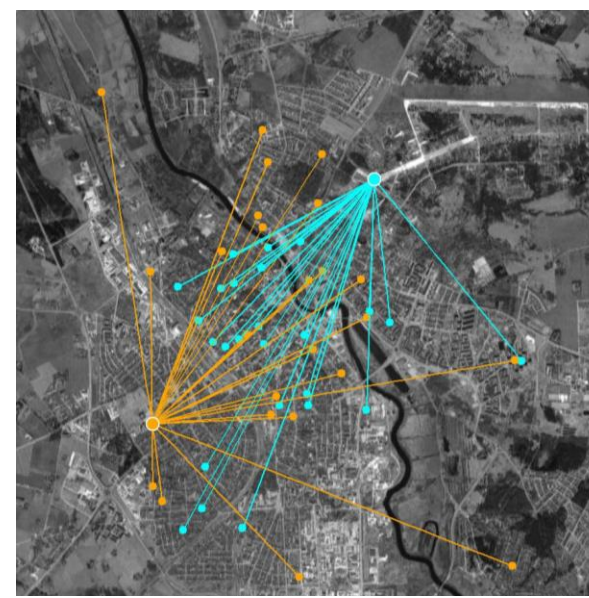


Nutitelefonipõhine GPS uuring

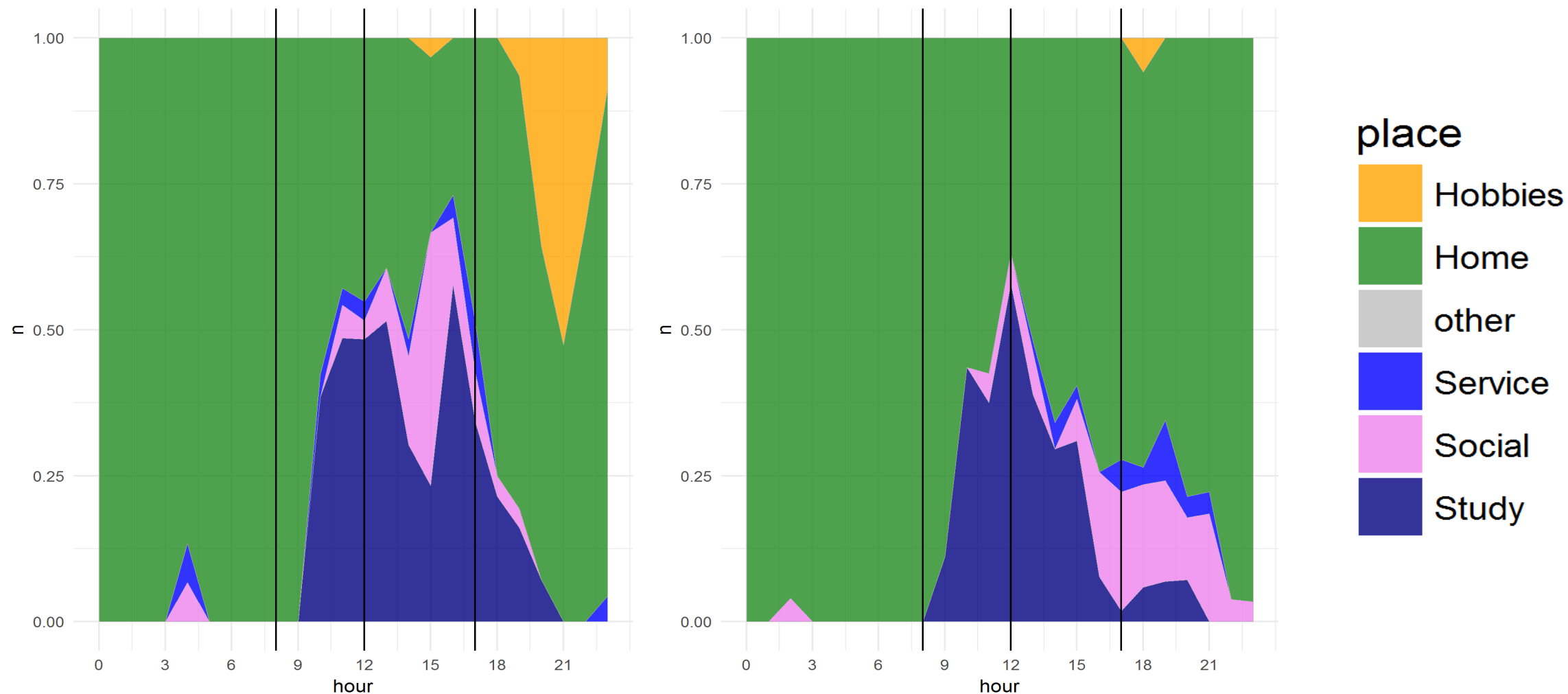




KOOL

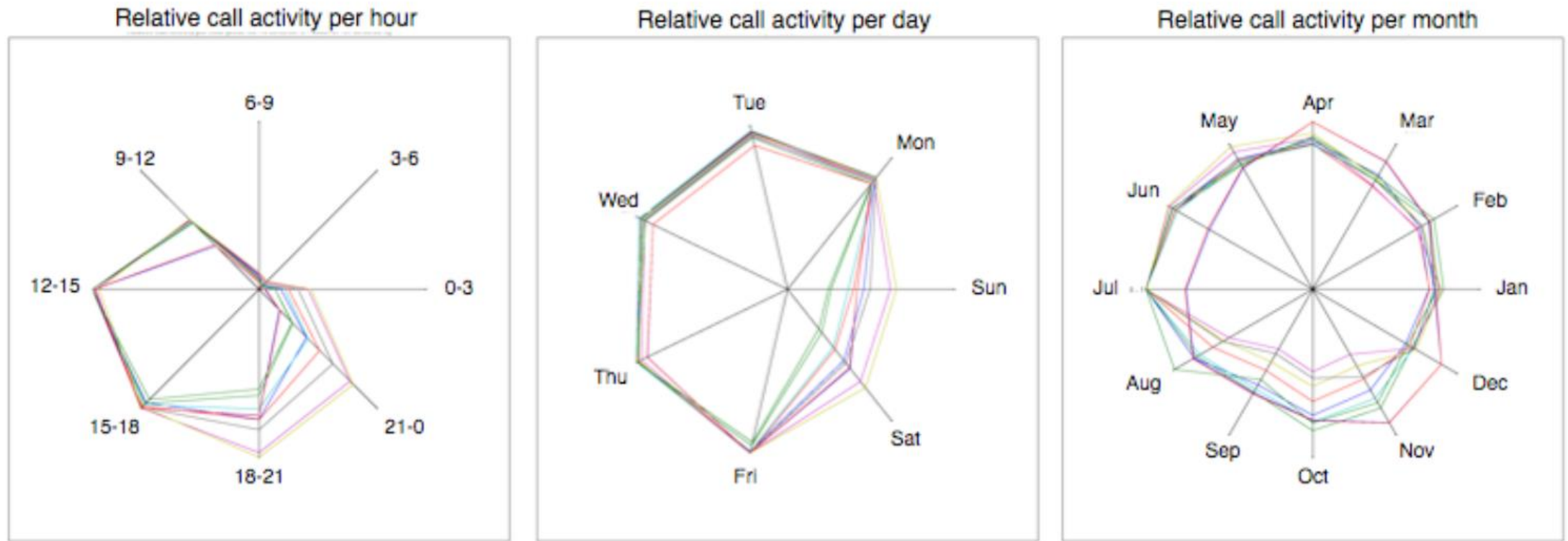


Ajakasutuse erinevus sõltuvalt ruumikontekstist



Graafika: Anto Aasa

Ajaline dünaamika ruumikasutuse hindamisel



Girardin et al. 2009. Quantifying urban attractiveness from the distribution and density of digital footprints. *International Journal of Spatial Data Infrastructure Research*, 4.

Ruumiline täpsus külastatavuse hindamisel

L

Song Gao 2015. Spatio-Temporal Analytics for Exploring Human Mobility Patterns and Urban Dynamics in the Mobile Age. *Spatial Cognition & Computation* 15:2, 86-114

